



# MONTHLY MEMBERSHIP PROGRESS REPORT

District 322 A

Results as of: 12/31/2018

GMT: SWADESH RANJAN SAHA

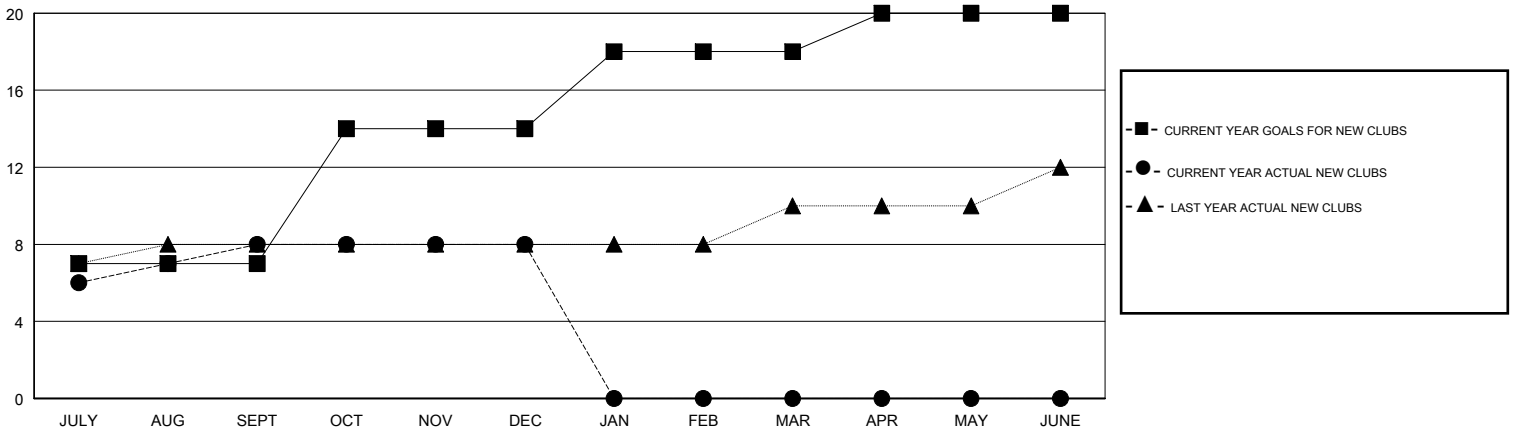
LOCATION INDIA

GMT CA

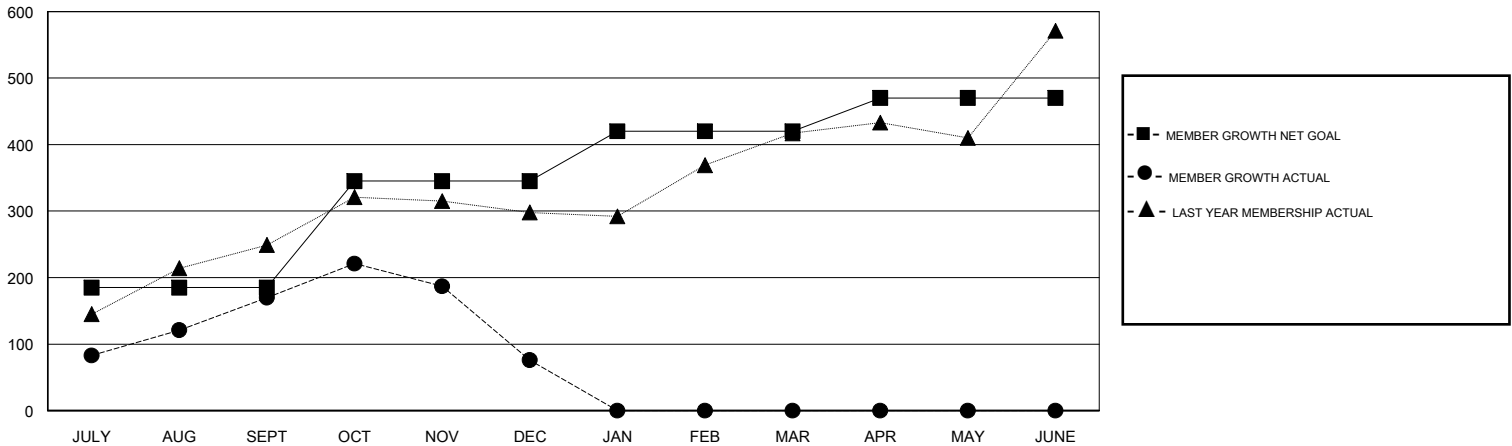
Clubs			
RESULTS FOR 2018-2019			
QUARTER	NEW CLUB GOAL	NEW CLUBS	DROPPED CLUBS
JULY/AUG/SEPT	7	8	1
OCT/NOV/DEC	7	0	3
JAN/FEB/MAR	4	0	0
APR/MAY/JUNE	2	0	0

Members			
RESULTS FOR 2018-2019			
QUARTER	MEMBER GROWTH NET GOAL	MEMBER GROWTH ACTUAL	DROPPED MEMBERS ACTUAL (including transfers)
JULY/AUG/SEPT	185	287	103
OCT/NOV/DEC	160	189	268
JAN/FEB/MAR	75	0	0
APR/MAY/JUNE	50	0	0

GOALS AND ACTUAL NEW CLUBS CUMULATIVE



GOALS AND ACTUAL MEMBERS CUMULATIVE



DROPPED CLUBS: 4
------------------

66 CLUBS OF 91 ADDED 1 OR MORE NEW MEMBERS

GENDER DISTRIBUTION	
MALE	2,488 (69.77%)
FEMALE	1,078 (30.23%)
Women Percentage Fiscal Year Goal: 2%	

DROPPED MEMBERS	
DECEASED	7
CLUB CANCELLED	95
OTHER	269
<b>TOTAL</b>	<b>371</b>

[CLICK HERE FOR CUMULATIVE MEMBERSHIP DATA](#)

TOTAL FAMILY UNIT MEMBERS	1,450
FAMILY MEMBERS PAYING HALF DUES	747